



Stylish design and proven reliability makes Barracuda our most popular quality banner stand. Barracuda is the most feature-rich single-sided roller banner available and has been specially designed for maximum convenience and ease of use.

features & benefits

- Choice of 800 or 1000mm widths
- Available in anodised silver
- Charcoal grey end caps
- Internal graphic housing designed to accommodate graphic media up to 450 microns thick*
- Secure slide in graphic system
- Ratchet tensioner
- Twist & lock telescopic pole
- Supplied with quality foam padded carry bag

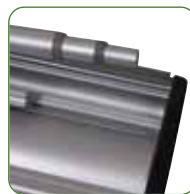
*Please test your substrate suitability before use



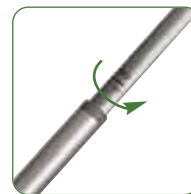
Universal grippa/
self-adhesive
top rail



Ratchet
Tensioner*



Integral Pole
Storage



Telescopic Pole
(Twist & Lock)



Slide-in Graphic

*Graphic tension may be re-applied or added to by turning the ratchet tensioner clockwise; 6 clicks of the ratchet tensioner equal 1 revolution of the banner stand spring. (NB Units are supplied pre-tensioned)

ual 1 revolution of

hardware specifications	graphic specifications	additional info
<p>Hardware Dimensions (mm): 2210 max (h) x 855 (w) x 195 (d) approx. 87.00" (h) x 33.66" (w) x 7.68" (d) approx.</p> <p>Base Dimensions (mm): 80 (h) x 855 (w) x 195 (d) approx. 3.15" (h) x 33.66" (w) x 7.68" (d) approx.</p> <p>Weight: 4.5kg (9.92lbs) approx (including carry bag)</p>	<p>Visible Graphic Dimensions (mm): 2130 max (h) x 800 or 1000 (w) 83.85" max (h) x 31.50" or 39.37" (w)</p> <p>750 min (h) x 800 or 1000 (w) 29.53" min (h) x 31.50" or 39.37" (w)</p> <p>Substrate: Add 300mm (12") to base of graphic to allow for roller mechanism Reccomended material thickness 225 - 450 microns (8.86 - 17.72 Mils)</p>	<p>Included in kit: Base, top rail, telescopic pole and carry bag</p> 